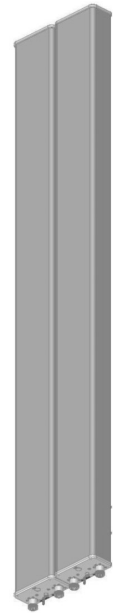


# 1710-2170/1710-2170MHz Dual Band Manual Tilt Panel Antenna

## Electrical Specifications

Frequency Range	1710 - 2170 / 1710 - 2170 MHz
Gain	19 dBi GSM1800, 19.5 dBi UMTS
Return Loss	> 15 dB
Polarization	Dual Slant $\pm 45^\circ$
Horizontal Beamwidth	62°
Vertical Beamwidth	5°
Electrical Downtilt	0° to 10° independently continuously adjustable
Upper Sidelobe Level	< -16 dB
Front to Back Ratio	> 30 dB
Isolation Between Ports	> 30 dB
Power Rating	300 W
Intermodulation	< -150 dBc (2 x 43 dBm)
Impedance	50 ohm
Lightning Protection	DC grounded
Connector Type	7-16 DIN female



## Mechanical Specifications

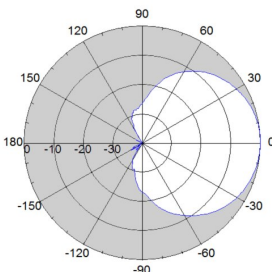
Antenna Dimensions	1850x330x78 mm
Packed Dimensions	1980x400x125 mm
Antenna Weight	19 kg
Radome Material	UPVC

## Maximum Environmental Ratings

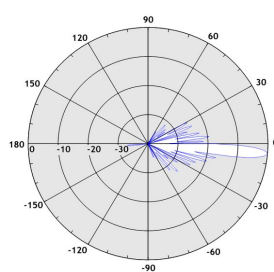
Rated Wind Velocity	200 km/h
Humidity	95% RH @ +30°C
Rain	140mm per hour
Lateral Loading Front	0.88 kN @ 160 km/h
Lateral Loading Rear	0.88 kN @ 160 km/h
Temperature	-40°C to +70°C

## Mounting Options

T-029-GL-E	Adjustable clamps
F-042-GL-E	Fixed clamps



Azimuth



Elevation

Last Updated: 17-12-2008



Argus Technologies (Australia) Pty Ltd

10-12 Lexington Drive, Norwest Business Park, Bella Vista NSW 2153 Australia

T +61 2 8884 0888 F +61 2 8884 0882 E [info@argusantennas.com](mailto:info@argusantennas.com) W [www.argusantennas.com](http://www.argusantennas.com)

Argus Technologies is continually improving products. Specifications may change at any time without notice